



scuttlebutt

THE SOLDIERS POINT MARINA NEWSLETTER



World Class facilities at **Soldiers Point Marina**

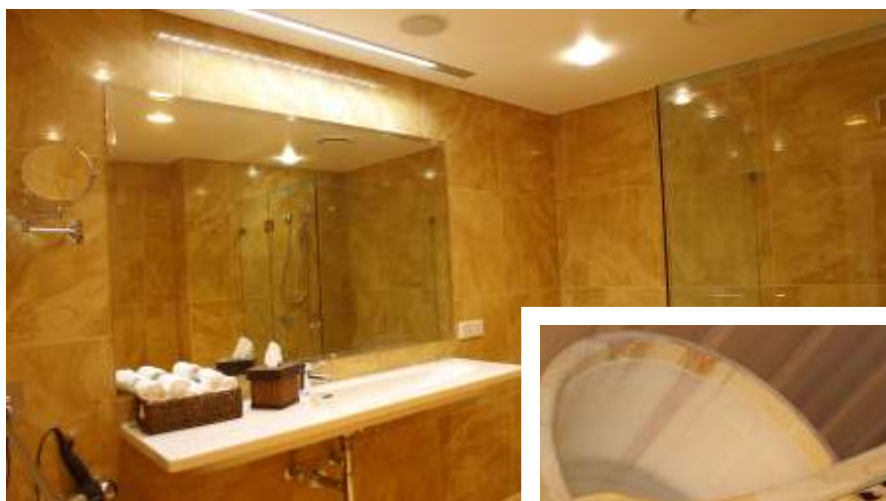
CONTINUING ITS QUEST to be the best boutique marina in Australia, Soldiers Point Marina now has the best personal care facilities to be found anywhere.

According to Marina Manager Darrell Barnett, the recently opened Boat Owners personal care facilities have been designed to provide berth holders with the very best in personal care and privacy.

The personal care facilities which are only available to boat owners with restricted key access, are world class. The foyer features modern decor and original art, is adorned with fresh flowers and contemporary furnishings. The fully airconditioned personal care facilities have a massage and beauty room with an on-call masseuse, Swedish spa and four superb private bathrooms - one of which is wheelchair friendly.

The luxuriously appointed bathrooms feature marble tiles, large vitreous china vanity basins, stainless steel rails and richly stained timber bench seats. The rooms are equipped with hair dryers, shaving mirrors, 110 and 240 volt power outlets and full length bevel edged mirrors.

Everything from the quality glass shower cubicles, the refreshing smell of eucalyptus in the hot rock sauna and fluffy white hand towels is designed to provide the very best in personal care for boat owners at Soldiers Point Marina.



BELOW: Visitors enjoyed seeing more than 40 boats on display



Soldiers Point Boat Show



TAKE ONE OF Riviera's best regional dealerships and combine a marine dealership selling world renowned Sea Ray boats with an emphasis on boating lifestyle and you have the ingredients of a successful regional boat show.

Steve Stewart, Dealer principal from R Marine at Port Stephens recognised the need to show case the Riviera range of convertibles, sports cruisers and sports yachts and in 2005 staged a boat show at Soldiers Point Marina.

So successful was the venture that when Lifestyle Marine, retailers of Sea Ray, Stacer, Boston Whaler and Haines Signature moved to Soldiers Point Marina earlier this year,

Steve considered it appropriate to extend an invitation to Lifestyle Marine to provide an even bigger 2006 boat show.

Said Damian Hurt, General Manager of Lifestyle Marine, "Personally, I believe there is too much competition between dealers when the real competition to increased boat sales comes from motor homes, swimming pools, caravans and people getting out of boating. When Steve Stewart approached us, we were quick to see the benefits of two dealerships working together to highlight the benefits of boat ownership".

With the deal done and the dates set, the two dealerships enlisted local PR company Out of the Square to develop a media plan to promote the show. A strategically designed media campaign involving radio, television and newspapers which commenced 11 days before the show brought 5,000 people to Soldiers Point for the October Boat Show.

"We were delighted with the crowd" says Steve. "By combining the resources of two well known dealerships, we were able to have more than 40 boats on display and from our perspective, it was an ideal opportunity to highlight the new Riviera 4700 Sports Yacht"

The leading edge facilities offered by Soldiers Point Marina make it an ideal venue for a boat show and both Steve Stewart and Damian Hurt are intent on making the 2007 show an even bigger success.

'We've gone from 3,000 visitors in 2005 to 5,000 visitors this year - who knows how many people we might draw to one of Australia's best regional boat shows", says Steve. As to the venue, Damian Hurt sums up the benefits, "It is a good professional facility that showcases our products so well".



3/149 SOLDIERS POINT RD SALAMANDER BAY Absolute waterfront

There's nothing like the feeling of an endless summer... You will feel like you are on a permanent holiday in this PENTHOUSE apartment.

- 3 Double bedrooms main with ensuite
- Palatial/living/dining areas opening onto huge terrace
- Absolute waterfront location but with privacy
- Stunning gourmet kitchen with heaps of storage
- Study, ducted air, C bus system, security system
- Double garaging
- This apartment will exceed your expectations

For details contact Cheryl



Cheryl Newton

FIRST NATIONAL REAL ESTATE

1/6 Stockton St., Nelson Bay

P: 024984 2240 M: 0412 680 696

Lifestyle Marine adds to Marina Appeal



Damien Hurt, General Manager



LIFESTYLE MARINE, a three generation family business committed to recreational boating has recently taken up premises at Soldiers Point Marina.

Owned and operated by the Hurt family since 1947, Lifestyle Marine were quick to identify opportunities to service their growing customer base in the Port Stephens area by having a presence at Soldiers Point.

Says Lifestyle Marine's General Manager Damien Hurt, "Soldiers Point Marina is an ideal environment and facility for our range of trailer boats and larger cruisers. The Marina is unique in that it offered us both hard stand space for our trailerable range which includes Stacer, Boston Whaler and Haines Signature as well as wet berths for our Sea Ray range of sports and flybridge cruisers". Because Soldiers Point Marina offers smaller wet berths in the seven - eight metre range, it has been a welcome facility for their smaller boat buyers.

Lifestyle Marine is the third largest Sea Ray dealer in the Asia Pacific region and the facilities at Soldiers Point Marina have allowed them to provide a complete range of services for their owners. They are also Mercury and Zodiac dealers and the workshop and slipway facilities mean they can offer complimentary services to their Port Macquarie headquarters.

According to Damien Hurt, Soldiers Point Marina is a good professional facility which is pitched at their target market. Few other facilities offer everything from bistro and restaurant dining to six star personal care facilities. After all, it's about lifestyle both in the marina and on the water.

www.lifestylemarine.com.au

PLAY LIKE A CHAMPION AT PACIFIC DUNES



Whether you love to play or simply enjoy a slice of the good life, enquire today about this truly world-class course, Pacific Dunes. Only 20 minutes to Nelson Bay and 25 minutes to the city centre of Newcastle, this magnificent premier golf and residential community, Pacific Dunes, is waiting to be discovered. Enjoy the good life every day in a place where you can *Live to Play*.

Golf Bookings: 02 4916 0500 www.pacificdunes.com.au





Riviera 4700 Sport Yacht

Story Peter Scott Photography Janey Harper

WORLD RENOWNED convertible manufacturer Riviera have ventured into new territory with the release of the stunning new 4700 Sport Yacht.

Powered by twin Caterpillar D12 715hp diesels, the 4700 sport yacht achieves a comfortable cruising speed of 23 knots at 1860 rpm using just 86 litres of fuel per hour. Although badged as a 47 footer, LOA is actually 54ft 9" with a beam of 15ft 9" giving a smooth stable ride in almost all conditions.

The hull has been specially designed with tunnels to give excellent lift, economy and a surprising 4 foot draft. The 4700 Sport Yacht is superbly equipped with a host of Raymarine electronics including radar, auto pilot, and E120 GPS plotter. Whilst ease of operation has been a primary consideration in the development of this outstanding sport yacht, safety too has been high on the priority list.

From a skippers perspective, it is a superb cruiser to operate. The fully airconditioned helm position, stylish and well laid out dash and comfortable electrically operated helm chair makes driving this sport yacht a breeze.

The one level approach to onboard entertaining has been given the six star treatment. An alfresco glass panel mounted on gas lifts opens the saloon to the aft cockpit giving enormous space for entertaining.

The Sport Yacht has a superb galley complete with dishwasher, electric hot plates, convection microwave and ample storage for

crocery and cutlery. To complement the galley refrigeration, a three drawer freezer was been built into the lower deck companionway together with a washer dryer.

The saloon is bright, open and beautifully appointed with magnificent cherrywood cabinets, plush leather lounges and a Bose sound system and pop up flat screen LCD TV.

While the saloon and aft cockpit have been designed for entertaining, the lower deck level has set new standards in sport yacht configuration. The 4700 features a three cabin layout and two bathrooms. There is a port side twin or double cabin with full head height, a starboard cabin also with full head height and upper and lower bunks and a spacious master state room located in the bow.

The wet areas feature separate showers with glass screens, teak and holly floors, European vanity basins and plenty of storage space. Each cabin has its own climate control and entertainment system and there is plenty of storage in lockers for an extended on water stay.

The 4700 Sport Yacht complete with hardtop, electric sunroof and the very latest creature comforts is a tribute to Riviera's commitment to continually improving on water lifestyle.

For further information on the 4700 Sport Yacht, contact R Marine Port Stephens at Soldiers Point Marina on 02 4982 7455 or visit their website at: www.rmarineportstephens.com.au

Soldiers Point gains Riviera Accreditation

Already an accredited Mercury and Volvo service centre, Soldiers Point Marine Centre has recently gained Riviera accreditation which allows the Centre to perform maintenance and service work on all Riviera vessels.

Soldiers Point Marine Centre staff, following participation in an intensive Riviera factory course, are now factory trained and accredited technicians.

The accreditation is a major boost for Riviera owners at Soldiers Point Marina. The Centre carries a substantial range of spare parts for Mercury and Volvo and will progressively add to their range to service the growing number of Riviera owners. With two slipways at the marina, the Service Centre can accommodate most vessels with a 40 and 80 tonne lift capacity.

For further information on the range of services, contact the Marine Centre on 4984 6300.



Tony Jolly with his Riviera Accreditation Certificate



Lunch at the Point

Restaurant Review Peter Scott **Photography** Janey Harper

ONE OF THE HUNTER region's most awarded restaurants is situated at Soldiers Point Marina. Appropriately named, The Point Restaurant has won numerous culinary awards including the Best Seafood Restaurant 2005 in the region's Awards of Excellence and was a finalist in the 2006 awards.

The menu is impressive and daily specials with an emphasis on seafood are designed to provide variety. From the wonderful selections of breads, we chose a bruschetta - thick toasty bread, pan fried and topped generously with diced roma tomatoes, pitted balsamic black olives, spanish onion, shredded lettuce and fresh herbs - all drizzled with virgin olive oil. Absolutely delightful and a light and tasty start to lunch.

As a working lunch, we by-pass the enticing selection of entree, many of which are available as mains, and settle on one of the specials of the day, King Snapper Fillet and a house specialty from the main menu - Tempura Prawns.

We also decide to share a Caesar salad. Service at the Point Restaurant is friendly, obliging and prompt. Despite the popularity of the restaurant and the heavy bookings on the day of our visit, our meals were served quickly. My hosts like to ask if you are in a hurry or have time to enjoy a relaxed lunch and they will cordially meet your timetable.

In terms of freshness, flavour and presentation, our meals could not have been better presented. The King Snapper fillet was served atop a generous bed of kifler potatoes and garnished generously with sundried tomatoes, sprouts, chives, fresh dill and a creamy honey mustard drizzle. Cooked to perfection, the snapper was light, ever so fresh and full of flavour.

The Tempura prawns were deep fried in a light beer batter. The large juicy king prawns were beautifully presented atop a bed of rocket and spanish onion rings. Served with a superb dip of sweet chilli and cucumber, this was a perfect summer dish. Served with fresh lime this was a meal fit for a king.

The traditional Caesar salad with generous slithers of crispy bacon, poached egg and shaved parmesan was a wonderful accompaniment to a perfect summer lunch.

The restaurant has a wide selection of local and imported beers. Wines, available by the glass or bottle, from some of the country's best regions including a nice selection of Hunter Valley, complement the fresh and inviting menu.

For a perfect summer lunch, The Point Restaurant at Soldiers Point Marina is unsurpassed.

Phone (02) 4984 7111
www.thepointrestaurant.com.au

Nautical Definitions

S.O.S.

Contrary to popular notion, the letters S.O.S. do not stand for "Save Our Ship" or "Save Our Souls". They were selected to indicate a distress because, in Morse code, these letters and their combination create an unmistakable sound pattern.

Starboard

The Vikings called the side of their ship its board, and they placed the steering oar, the "star" on the right side of the ship, thus that side became known as the "star board." It's been that way ever since. And, because the oar was in the right side, the ship was tied to the dock at the left side. This was known as the loading side or "larboard". Later, it was decided that "larboard" and "starboard" were too similar, especially when trying to be heard over the roar of a heavy sea, so the phrase became the "side at which you tied up to in port" or the "port" side.



FAMILY HOME ON HORIZONS GOLF RESORT SALAMANDER BAY

Designed to embrace the tranquillity of the adjoining golf course this exceptionally spacious home offers a magnificent family environment. Step out your door fro a stroll on the course or indulge with a swim in the infinity heated lap pool. All Principal living rooms and terraces look out over the 9th tee, crating a sense of peace & privacy.

- 4 bedrooms
- Study or (BR5)
- 2 Full bathrooms & 2 ensuites
- Formal living area pool
- Rumpus with billiard table & wet bar
- Ducted air
- Double garage & space for buggy

For details contact Cheryl



Cheryl Newton
FIRST NATIONAL REAL ESTATE

1/6 Stockton St., Nelson Bay
P: 024984 2240 M: 0412 680 696

Royal Volunteer Coastal Patrol

PORT STEPHENS Royal Volunteer Coastal Patrol is one of the busiest coastal patrols on the New South Wales Coast.

Each year the station, located at the Inner Lighthouse at Nelsons Bay, handles more than 32,000 radio calls and a further 22,000 phone calls. According to Operations Officer Geoff Moore, with the increasing number of boat registrations, demand for their services is growing at an ever increasing rate.

In 2005/2006, the Patrol responded to more than 230 calls for assistance on the water - up from around 100 calls the previous year.

Although the Port Stephens Royal Volunteer Coastal Patrol has some 20 competent and fully trained crew on standby at all times, the Patrol has recognised the need to provide more training facilities for boat owners. In January, the Patrol will take over local responsibilities for Boat Licensing from New South Wales Maritime.

To allow the Patrol to handle their increasing training schedules, a new training facility was opened by local member Bob Baldwin MP on Saturday 25 November. The new facility was made possible through a Federal Government Regional Partnerships Grant and the benevolence of the family of GME founder Edward C. Dunn.

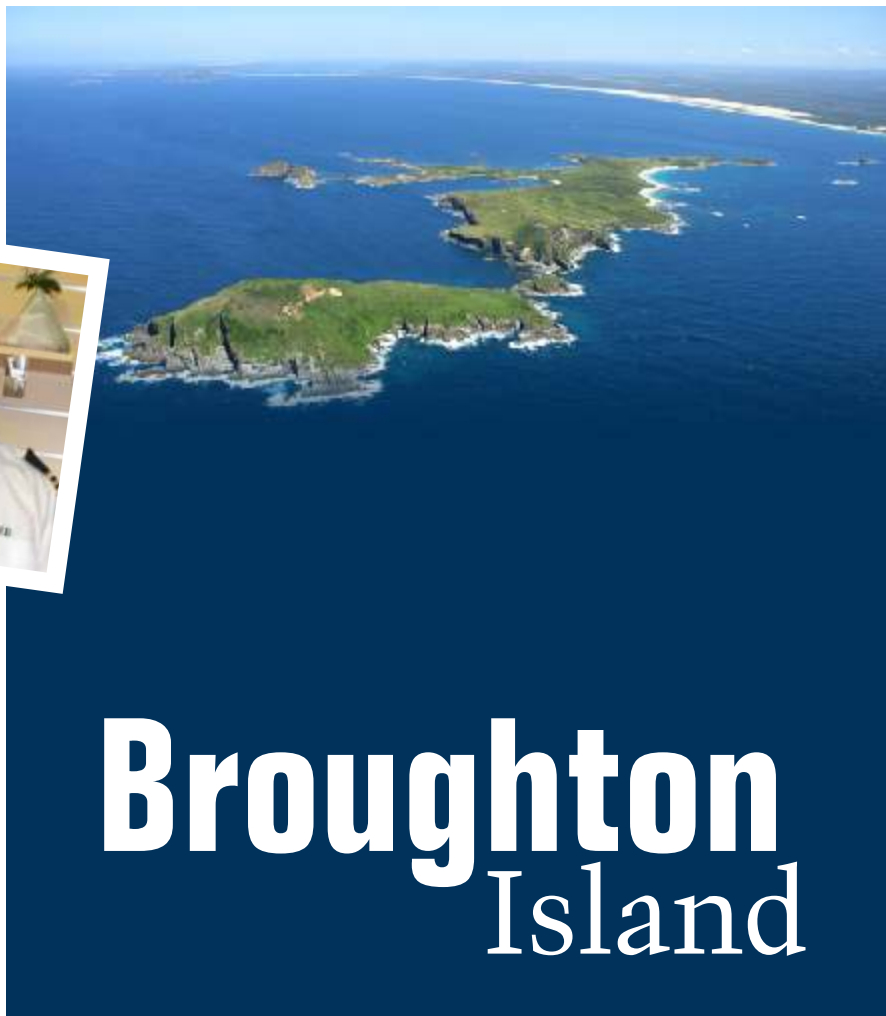
The impressive purpose built training and conferencing facility has full audio visual and has eight fully networked computer stations to allow trainees to fully understand modern communication methods and electronics.

The Coastal Patrol also provides considerable services to the boating fraternity including the provision of first aid services for the annual Port Stephens Game Fishing Tournament as well as providing start boats for local sailing events.

For further information on the activities and training programs of the Port Stephens Royal Volunteer Coastal Patrol phone 4981 3585.



Geoff Moore,
Operations Officer



Broughton Island

EIGHT NAUTICAL MILES north east of Port Stephens within easy cruising reach are the Broughton Islands. The group consists of two islands, Broughton Island and Little Broughton Island. Some say the islands are the best kept secret on the New South Wales coastline. They are quite spectacular places with rugged cliffs, plentiful wildlife, beautiful beaches and inlets. The islands are under the control of NSW National Parks and Wildlife and apart from the odd camper, the islands are uninhabited.

For some reason Broughton Island is one of those places with tales a plenty. Local folklore suggests there is buried pirate treasure there while another rumour suggests that Vladimir Petrov, the Russian spy who defected to Australia in 1954, stayed in a safe house on Broughton Island.

The island group has three main anchorages, North Bay or Providence Bay as it is sometimes known: Coal Shaft Bay and Esmeralda Cove. Esmeralda Cove is a pretty spot with a fresh water spring, public toilet and an emergency VHF radio. The Cove is excellent for swimming, beach walks and a spot of fishing. There are some local fishing huts dotted around the Cove and these rather

modest dwellings can be booked for a small donation towards their upkeep.

Esmeralda Cove is not a place to anchor in a south-easter and there are a few shoals and boomies to avoid so care should be taken if moving about the anchorage at night.

Coal Shaft Bay is the preferred anchorage in a south easterly swell with beautiful sand cliffs as a backdrop to the anchorage.

North Bay has the only public moorings on the island. The anchorage can be very uncomfortable in a northerly swell but a good place to hide in a south-easter. A up-to-date chart, good polarised sunglasses and depth sounder are essential to safely navigate into North Bay anchorage. Follow Alan Lucas' (Cruising the NSW Coast) suggested entry line - from the western end tracking close to shore, passing inside Inner Rock. There are shallow reefs off the northern end of the beach, starting from about 150 metres from the shore.

Broughton Islands are quite special and so close to the mainland, they are an ideal day or weekend trip or longer if you are lucky enough to have time to spare exploring the islands.



Did you Know?

A COMPASS NEEDLE will experience 'dip' (also known as magnetic inclination) due to the spherical shape of the earth. At the equator the lines of magnetic force will be almost parallel to the earth's surface but as you move towards the poles they will be increasingly angled toward the surface giving the compass needle more 'dip'. In theory at the centre of the poles (north or south) the lines of magnetic force should be exactly perpendicular to the earth's surface. In reality what happens to the compass needle is that it becomes unstable, wanting to dip a great deal but unable to do so.

Compasses are specific and pre-set for whichever hemisphere they are to be used in. This is because the needle 'dips' in an opposite direction in the northern hemisphere (head down) to that in the southern hemisphere (tail down).



ABOVE: Luxury 18 metre Cresta, Inya Dreams

Inya Dreams

INYA DREAMS is amongst the best luxury charter boats operating on Australia's east coast. This luxury charter vessel, plies east coast waters from Port Stephens to the Great Barrier Reef and handles almost every on-water adventure imaginable from game fishing to dolphin and whale watching.

Inya Dreams is an 18 metre (60ft) custom built three cabin Cresta flybridge cruiser (two double staterooms have ensuites) capable of 30 knot performance and a comfortable cruising speed of 18 knots.

Charters are available for almost any on-water activity including fishing, snorkelling, cruising or corporate entertaining. Inya

Dreams cruises the tropical waters of the Great Barrier Reef from June to November and is based in the Port Stephens area from January to August each year.

Whilst aboard Inya Dreams' guests are offered fresh onboard meals with both a local and international flavour as well as their world famous cocktails. An experienced skipper and crew complete a successful formula for relaxation aboard regardless of whether your dream is just a day aboard or an extended cruise.

For further information or bookings phone Inya Dream Charters on 02 4982 7332 or visit www.inyadreamscharters.com.au

INYA DREAMS CHARTERS LIVE THE DREAM WITH INYA !

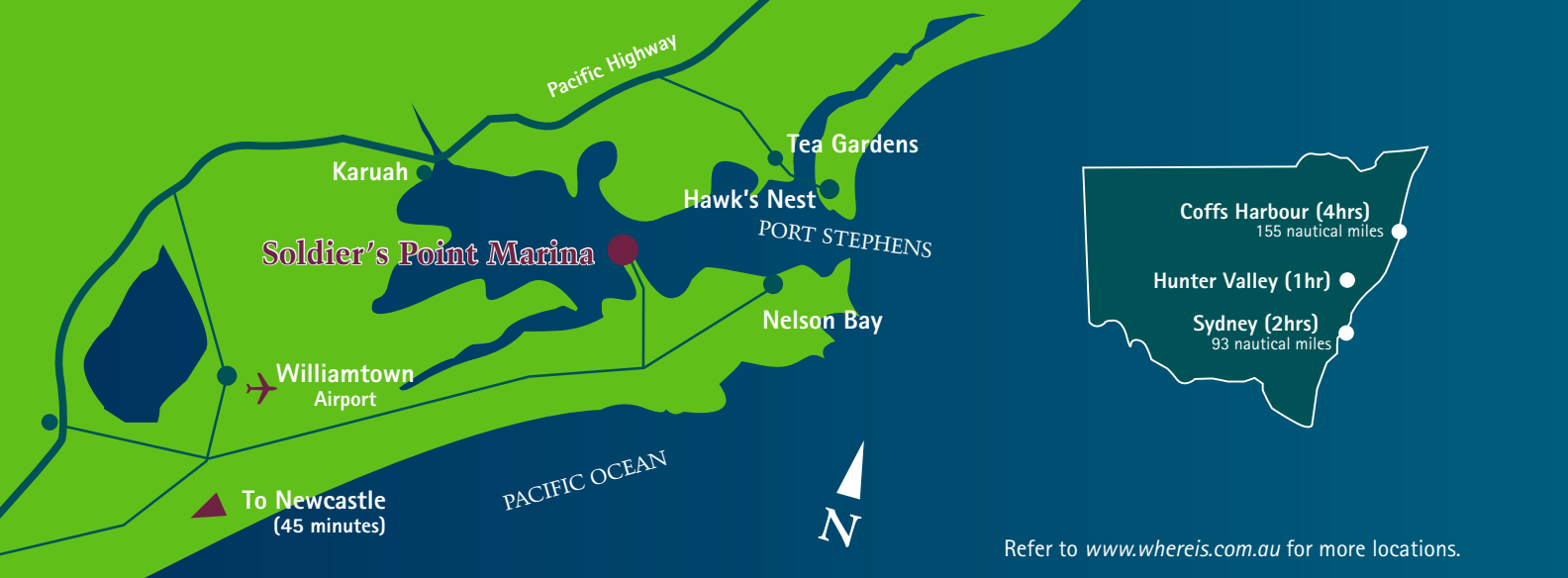
"Inya Dreams" a local game fishing boat has arrived back at Soldiers Point Marina after successfully fulfilling it's charter commitments in Cairns.

Skippered by Brian Felton and Warren "wazza" Anderson who between them have 45 years game fishing experience worldwide.



Bookings now being taken for the 2006-2007 Port Stephens season

"Inya Dreams" is a 56' Cresta purpose built game fishing vessel, fitted with the very best in tackle, GPS navigation & fish finding technology
For bookings & enquiries call Brian on 0428642503



Refer to www.whereis.com.au for more locations.

what's on

January 20	Masters Surf Life Saving Carnival, Fingal Beach
January 27	Port Stephens Winery ' Swingin With a Big Band' 6-10pm, 15 piece Big Band. Contact: 4982 6411
February 15-18	Northern Waters Invitational Tournament Contact: Ross Hunter 02 9534 2378
February 24-25 & March 3-4	NSW Game Fish Assoc Interclub Competition
February 27	NSW Game Fish Assoc Ladies Day
March 11-12	Riviera Billfish Shoot-out Tournament Contact: Steve Stewart 0407 632 378
March 18	Annual Jazz at the Winery, 11am-4pm. Live jazz all day at Port Stephens Winery. Contact: 4982 6411
March/April	Hunter Valley Harvest Festival - A three month programme celebrating the annual harvest. Contact: www.winecountry.com.au
23-25 March	Hunter Boat Show - Newcastle Entertainment Centre
30 March - 1 April	Club Marine Trailer Boat Tournament - Port Stephens. www.tbft.com.au
April 6-9	Easter 2007
April 7	Boating Clinics with Leif Albertson, Soldiers Point Marina Contact: 0428 883 335
April 8	Fishing Clinic with John "Stinker" Clark, Soldiers Point Marina. 8.30-10.30 am. Contact: 4981 2845
1st & 3rd Sunday of every month	Nelson Bay Craft Markets, Neil Carroll Park, Shoal Bay Road, Nelson Bay
2nd & 4th Sunday of every month	Tomaree Markets, Tomaree Sports Complex, Nelson Bay Road, Nelson Bay.

ATTRACTING MORE than 100 lady anglers, the New South Wales Interclub Ladies Day Tournament is one of the most popular activities during the annual Game Fish Tournament held from Port Stephens.

The Ladies Day Tournament has been held almost since the inception of the Interclub Competition some 45 years ago and is held between the two weekends of competition.

The 2007 Ladies Day Tournament will be held on Tuesday 27 February and is open to all ladies, regardless of age. The best part is that there is no entry fee for the tournament although the boat upon which the lady anglers compete must be registered for the Interclub Competition.

Fishing times are from 0700 hours to 1600 hours. There are no entry forms to fill in as such. Skippers are simply required to radio in the names of competing anglers as soon as the tournament gets underway.

The official weigh-in and presentation is held at the Riviera Marquee at Nelson's Bay wharf.

For further information on this fun-filled tournament, phone NSW Game Fishing Association secretary Ms Pat Jones on 0417 770 900.

Ladies Day Game Fish Tournament

contact list

Soldiers Point Marina

Tel: (02) 4982 7445 Fax: (02) 4982 7193 Email: db@soldiersptmarina.com.au Web: www.soldierspointmarina.com.au

R Marine Tel: (02) 4982 7455 Fax: (02) 49820280 Email: info@rivieraportstephens.com

Lifestyle Marine Tel: (02) 49847570 Email: portstephens@lifestylemarine.net.au

The Point Restaurant Tel: (02) 49847111 Email: julie@thepointrestaurant.com.au

Soldiers Point Massage & Beauty Centre Tel: (02) 4982 7773

Soldiers Point Marine Centre Tel: (02) 4984 6300 Fax: (02) 4984 6305 Email: admin@spmcentre.com